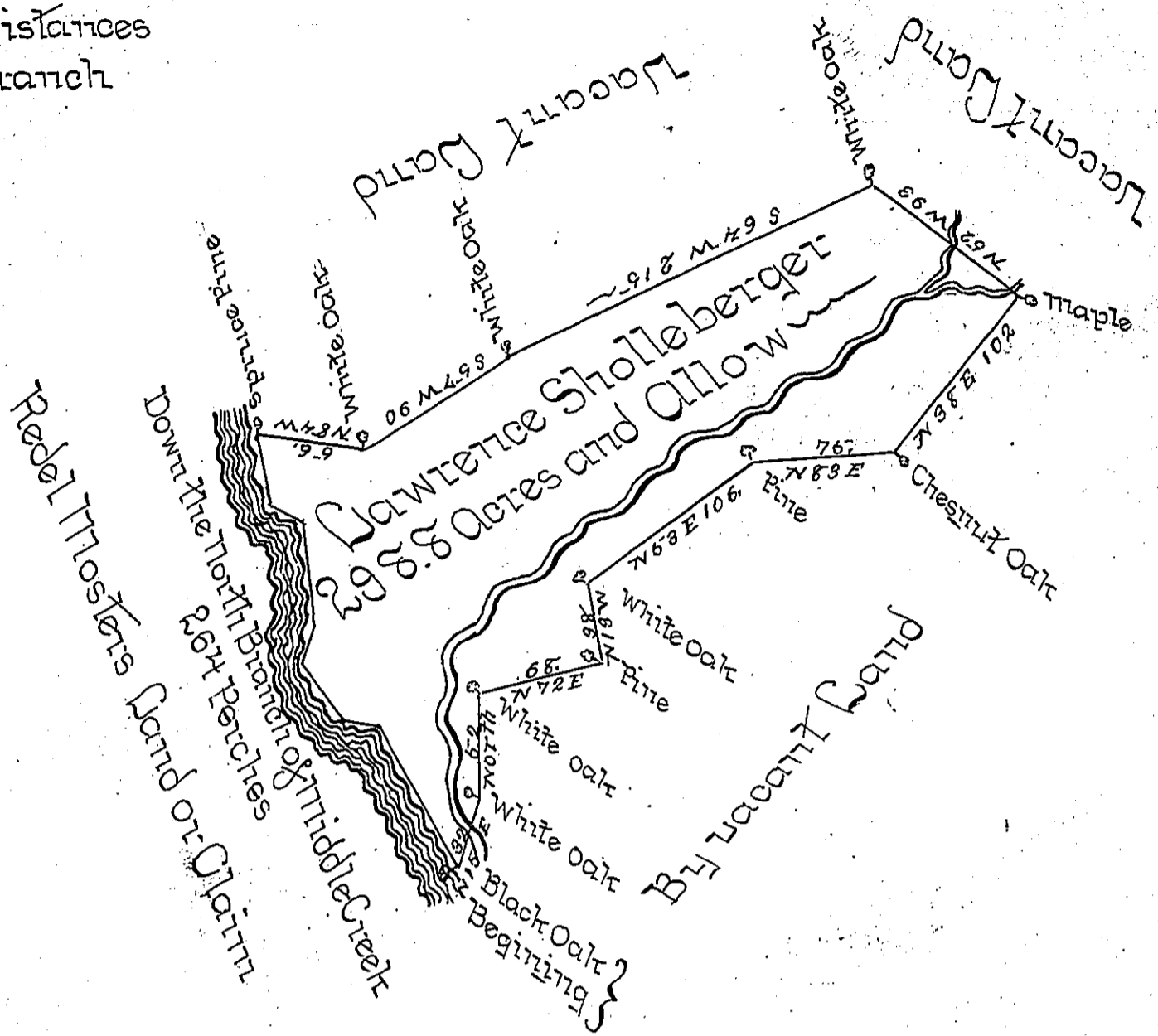


Courses & Distances  
Down the Branch

S 14 E 30  
S 56 E 23  
S 6 E 58  
S 29 W 16  
S 32 E 74  
S 46 E 22  
S 83 E 18  
S 32 E 83  
— 267



The Draught of a Tract of Land called  
situate on the north Branch of Middle Creek in the County  
of Northumberland containing Two Hundred Ninety Eight  
Acres 136 Perches with the usual Allowance of Six Acres PC<sup>t</sup>  
for Roads: Surveyd the 26<sup>th</sup> day of June Anno Dom: 1771.  
In Pursuance of an Order of Survey to Lawrence Sholle-  
berger Bearing Date at Philad<sup>a</sup> the 22<sup>d</sup> day of September  
Anno Dom: 1768 and Numbered 5791 ~

To John Lukens Esq<sup>r</sup> Secy. } P<sup>r</sup> W<sup>m</sup> MacLay D.S.  
of Pennsylvania - }

IN TESTIMONY that the above is a copy of the original remaining on file in the  
Department of Internal Affairs of Pennsylvania, made con-  
formably to an Act of Assembly approved the 16th day of  
February, 1833, I have hereunto set my Hand and caused  
the Seal of said Department to be affixed at Harrisburg, this

— 8<sup>th</sup> — day of — January — 1898 —

*James W. Fatta*  
Secretary of Internal Affairs.